



**SUBJECT: Adding Cab Clearance Lamps**  
**MODEL YEARS: 2024 & Beyond**  
**AFFECTED MODELS: UU Model THREE**  
**INITIATION DATE: 04/24/2024**  
**REVISION: xx/xx/xxxx**

**AWARENESS:**

**Description of Concerns:**

- Some upfit vehicles may require additional centralized Cab Roof lighting to meet FMVSS compliance criteria. Completed vehicles that do not exceed OEM Cab Height per IVD may require additional lighting.
- The `Second Stage Manufacturer` must insure the `Completed Vehicle` FMVSS compliance with the Mullen Rev. 3 Incomplete Vehicle Document (IVD).

**Solution:**

- The Dealer, Second Stage Manufacturer, Lease or Owner in possession of the vehicle should determine if installed upfit content exceeds the Cab Height of the completed vehicle.
- If the completed vehicle as upfit exceeds the OEM Cab height, then clearance lighting should be permanently installed at the most vertical, widest front, and rear points of the Upfit Body.
- If the completed vehicle as upfit does not exceed the OEM Cab height to meet FMVSS and IVD requirements (3) additional clearance lamps should be installed centrally on the forward roof area just above the windshield
  - Cab Roof Clearance lamps should have Amber Lenses
  - Roof Antenna should not be altered or relocated.
  - Follow aftermarket lamp BOM recommendations & instructions below.

**B.O.M.**

- 1) (3) Lamp Amber Light Bar (or equivalent)

Kaper II 1A-S-326A Amber LED Identification Light (available on Amazon)



- 2) (2) Additional Amber Lamps (or equivalent)

Kaper II L14-0061A Amber LED Marker/Clearance Light (available on Amazon)



**Basic Instructions**

- 3) Remove Overhead Console assembly (OHC) (follow instructions)
- 4) Install LED 3-Clearance Lamp Amber Light bar on roof (follow instructions)
- 5) Install (2) additional LED Amber clearance lamps or equivalent (follow instructions)
- 6) Reinstall OHC (follow instructions)

**Detailed Instructions**

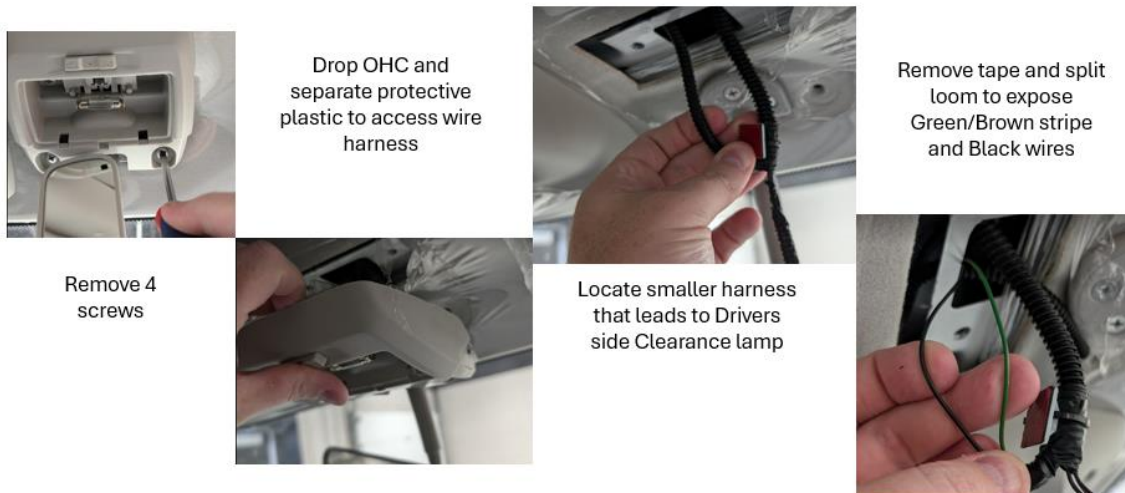
**Step 1**

**Remove OHC to access lamp wiring.**



**Step 2**

**Drop OHC and locate lamp Wiring.**



**Step 3**

## Drill Hole for Identification light bar



Measure and mark a point 1.5-1.75" aligned from the Center of antenna.

Drill a hole using a 9/32 bit for wire routing



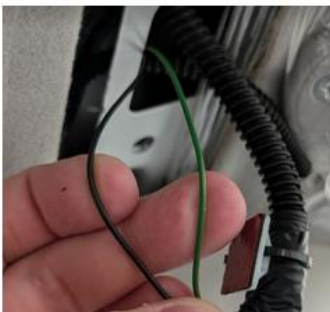
Route wire through hole to OHC area

Temporarily tape lamp in place for making wire connections in cab



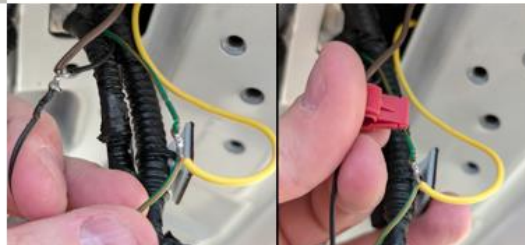
**Step 4**

## Wire in Identification lamp



Locate Power and Ground wires from Pg 3.

Join power and ground from lamp to Green/Brown stripe for Power and Black for Ground. I stripped and soldered wires but low voltage wire splices could work as well.



Tape off splices and check for operation of ID lamp

**Step 5**

## Seal and secure Identification lamp



Align lamp to desired position as close as possible to center of antenna and drill pilot holes for retaining screws

Apply a generous amount of silicone or similar sealer to wire hole and align mounting holes with screw mount locations.



Apply a generous amount of silicone or similar sealer mounting screw holes and secure to vehicle.



**Step 6**

## Remove Clearance lamps (passenger and driver)



Remove 2 screws from top of assembly to access lamp base.

Remove 2 screws from lamp base.



Pull lamp base upward to expose lamp connection and unplug.

Lamp side connectors can be cut and soldered to new lamps for reassembly..





**Step 7**

## Connect new Clearance lamps (passenger and driver)



Connect new lamp assembly to vehicle wire harness.

Align new lamp base and fasten to cab with screws from old lamp.



Test assembly to confirm operation.

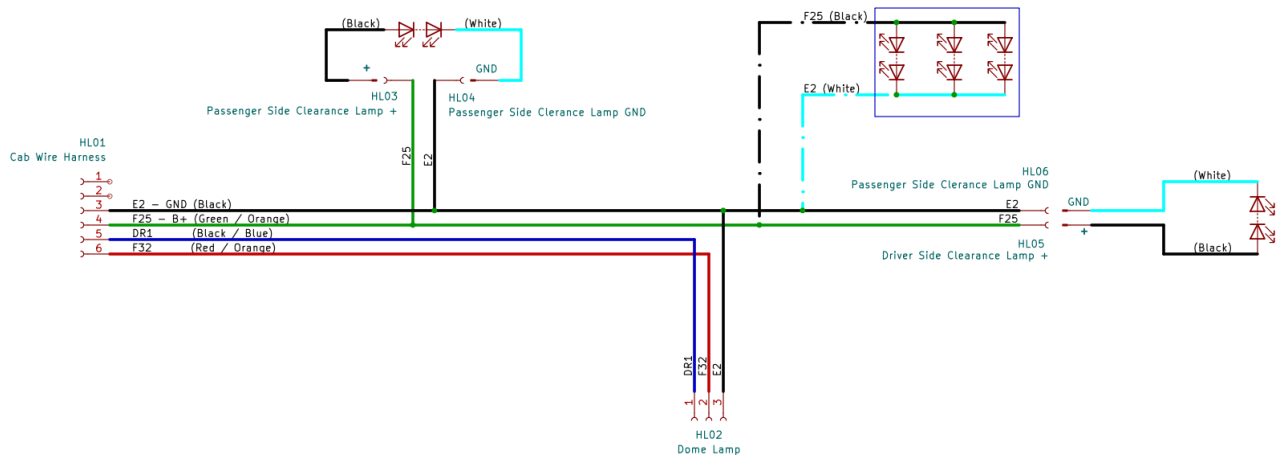
Snap lens to base and repeat slides 7-8 for other side.



**Step 8**

Test & cycle all lamps installed for proper usage. Reinstall OHC assembly, reverse the removal procedure and follow any specific installation instructions.

### Clearance Lamp Wire Harness Schematic



# Completed assembly

